



Sensata
Technologies



3MP

Motor Protector/Thermal Cut-out

KEY BENEFITS

Minimizes the total cost of the motor protection function

Maximum protection under locked rotor conditions

Provides extra flexibility during the motor manufacturing process

Reduces the total need of motor protector type; one code for several applications

Provides mounting flexibility

Low cost solution for transformer protection

As world leader in appliance motor protection, Sensata Technologies has developed the 3MP for 120 and 250 Vac applications to operate in wider temperatures and current ranges than offered by existing protection solutions. In providing consistent performance characteristics and excellent reliability, its features anticipate future technical protection requirements on the AC motor market.

Design & operating principles

The 3MP consists of a metal housing with an integrated terminal. The housing holds the pre-set Klixon® snap action bimetal disc. The split plate carries a resistive S-shaped wire which provides additional current sensitivity. The advanced contact system - one on the bimetal disc and one on the plate - in combination with the strong disc guarantees a long life and reliable cycling. The combination of a variety of standard terminal configurations and carefully selected materials provides easy handling and mounting. Customized terminal configurations are available on request. Wires including connectors can be automatically attached to the standard crimp terminal. Sensata Technologies supplies a range of standard lead configurations; customized solutions are available on request. In construction where the 3MP device is contacting conductive parts of the motor assembly, Sensata Technologies can deliver the devices with a Mylar™ insulation sleeve. Customized coding and colouring of the coding tape is an option on request.

The operating principle of the 3MP is both simple and effective. The protector is actuated by current passing through it and by the heat received from the surrounding parts. The electrical circuit is interrupted when the disc reaches its pre-set temperature. As the device cools down to a safe temperature, the contacts will automatically reset. The bimetal disc provides excellent thermal and current sensitivity in an overload situation. Under locked rotor conditions the integrated heater in combination with the bimetal disc provide very accurate trip times for maximum protection.

Applications

The 3MP is widely used throughout the world in electric motors for washing machines, dishwashers, dryers, vacuum cleaners and industrial applications in the 120 and 250 Vac applications. 3MP features permit to move the motor protector location outside the winding, providing the motor manufacturer extra flexibility during the manufacturing process. The recent certification as a thermal cut-out device combined with its unique current sensitivity, positions the 3MP as an advanced and cost effective solution to protect toroidal transformers.

KLIXON
®



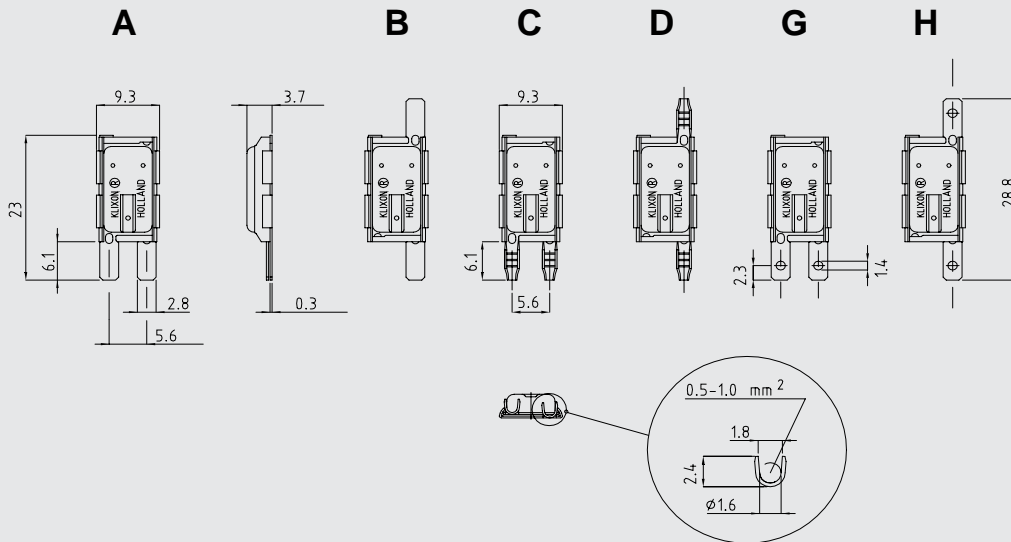


Sensata

Technologies

Dimensions (mm)

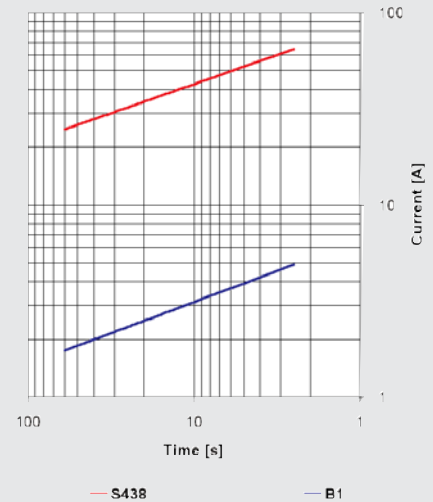
Terminal configurations



The curves of First Cycle Tripping time and Ultimate trip current are meant to be for selecting samples to perform verification tests only. In the figures two curves of a wide range of possibilities are shown. The level and slope can be varied by making an other selection for the pre-set temperature, bimetal disc and/or heater.

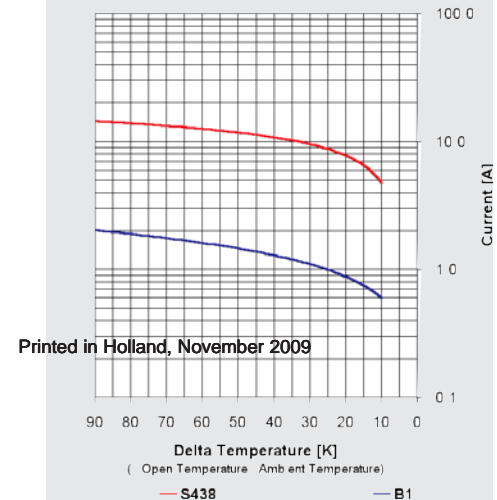
Average First Cycle Tripping Time vs. Current (ambient is 25°C)

Approx. to be used for selecting samples for verification tests



Ultimate Trip Current vs. Ambient Temperature (non-circulating air)

Approx. to be used for selecting samples for verification tests



Printed in Holland, November 2009

Declarations

Declarations to EN60730-2-9	Declarations to EN60730-2-2
Purpose of the control.....Thermal cut-out	Purpose of the control.....Thermal Motorprotector
Construction.....Incorporated, non-electronic	
Degree of protection.....IP00	
Terminals for ext. conductors.....For internal conductors only	
Method of (dis) connection of terminals.....Soldering, spotwelding	
Temperature limits of the switchhead.....170°C	
PTI of insulation materials.....PTI 175	PTI of insulation materials.....PTI 175
Method of mounting.....Off-winding, fixed position, no mounting limitation	Method of mounting.....Off-winding, fixed position, no mounting limitation
Operating time.....For continuous operation	
Type of action.....Type 2B	Type of action.....Type 3C
Reset characteristic.....Automatic	Reset characteristic.....Automatic
Extent of sensing element.....Whole control	
Control pollution degree.....Degree 1	Control pollution degree.....Degree 2

Certifications

Agency	File number	Standard
ENEC	2014531.07	EN60730-2-2 Thermal motor protector
ENEC	2014531.07	EN60730-2-9 Thermal cut-out
UL / C-UL	E15962	UL2111/ CSA-C22.2 No. 0-M91

Specifications

Standard operating temperature range	from 80°C - 170°C (Increments 5K)
Tolerance on open temperature	± 5K
Peak temperature (5 min)	200°C
Max. Ambient temperature	T-open +20°C
Time check at T-ambient 25°C	4 to 10 seconds
Contact rating	27.5 A @cos 1 / 250Vac / 500 cycles 18 A @cos 0.6 / 250Vac / 1.000 cycles 18 A @cos 0.6 / 120Vac / 15.000 cycles



Sensata

Technologies

TECHNICAL / SALES SUPPORT

Holland
Phone +31 546 879560 Fax +31 546 879204

Internet: www.sensata.com

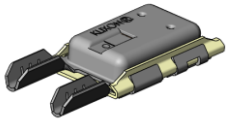
Email: info-cpe@list.sensata.com

Important Notice: The products and services of Sensata Technologies and its subsidiaries described herein are sold subject to Sensata's standard terms and conditions of sale. Customers are advised to obtain the most current and complete information about Sensata products and services before placing orders. Sensata assumes no liability for applications assistance, customer's applications or product designs, software performance, or infringement of patents. The publication of information regarding any other company's products or services does not constitute Sensata's approval, warranty or endorsement thereof.

Printed in Holland, June 2010



Sensata
Technologies



7MP

Motor Protector

KEY BENEFITS

Provides higher level of safety for appliances having free access to rotating parts

Minimizes the total cost of the motor protection function

Guarantees to pass the UL 18 days locked rotor test in combination with high currents

Assures maximum protection under locked rotor conditions

Provides mounting flexibility, terminal configurations can be made according to customer requirement

Varying of both bimetal and S-wire resistivity creates a current-time characteristic optimized for each specific application

Unique combination of bimetal disc and resistivity wire guarantees very precise tripping times thus prevents too high motor temperature

Lead wire is optional that crimped to terminal

Soldering solution with Tin-plating terminal

As world leader in appliance motor protection, Sensata Technologies has developed the 7MP for 120 and 250Vac applications to operate in wider temperatures and current ranges than offered by existing protection solutions. In providing consistent performance characteristics and excellent reliability, its features anticipate future technical protection requirements on the AC motor market.

Design & operating principles

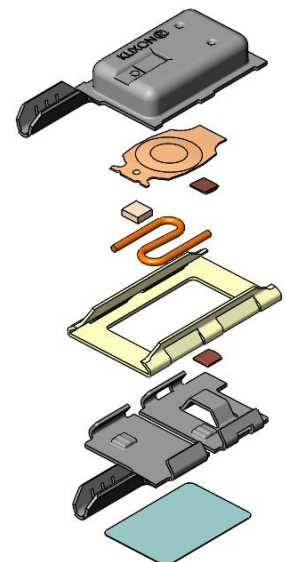
The 7MP consists of a metal housing with an integrated terminal. The housing holds the pre-set Klixon® snap action bimetal disc. The split plate carries a resistive S-shaped wire which provides additional current sensitivity. The advanced contact system - one on the bimetal disc and one on the plate - in combination with the strong disc guarantees a long life and reliable cycling. The combination of a variety of standard terminal configurations and carefully selected materials provides easy handling and mounting. Customized terminal configurations are available on request. Wires including connectors can be automatically attached to the standard crimp terminal. Sensata Technologies supplies a range of standard lead configurations; customized solutions are available on request. In construction where the 7MP device is contacting conductive parts of the motor assembly, Sensata Technologies can deliver the devices with a Mylar™ insulation sleeve. Customized coding and coloring of the coding tape is an option on request. The operating principle of the 7MP is both simple and effective.

The protector is actuated by current passing through it and by the heat received from the surrounding parts.

The electrical circuit is interrupted when the disc reaches its pre-set temperature. As the device cools down to a safe temperature, the contacts will automatically reset. The bimetal disc provides excellent thermal and current sensitivity in an overload situation. Under locked rotor conditions the integrated heater in combination with the bimetal disc provide very accurate trip times for maximum protection.

Applications

The 7MP is widely used throughout the world in electric motors for washing machines, dishwashers, dryers, vacuum cleaners and industrial applications in the 120 and 250Vac applications. 7MP features permit to move the motor protector location outside the winding, providing the motor manufacturer extra flexibility during the manufacturing process. The recent certification as a thermal cut-out device combined with its unique current sensitivity, positions the 7MP as an advanced and cost effective solution to protect toroidal transformers.



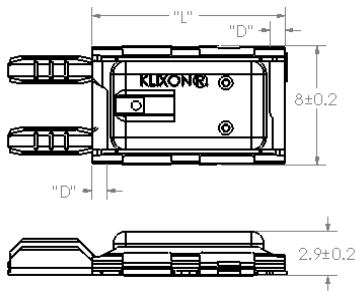


Sensata

Technologies

Dimensions

L: 12.7mm
D: 1.0 mm



Protector ratings

Contact rating	
250Vac/6A@cos0.7	3000cycles
120Vac/10A@cos0.7	

The curves of First Cycle Tripping time and Ultimate trip current are meant to be for selecting samples to perform verification tests only. In the figures two curves of a wide range of possibilities are shown. The level and slope can be varied by making another selection for the pre-set temperature, bimetal disc and/or heater.

Declarations

Declarations to EN60730-2-2	
Purpose of the control.....	Thermal Motorprotector
Construction.....	Incorporated, non-electronic
Degree of protection.....	IP00
Terminals for ext. conductors.....	For internal conductors only
Method of (dis) connection of terminals.....	Soldering, spotwelding
Temperature limits of the switchhead.....	170°C
PTI of insulation materials.....	PTI 175
Method of mounting.....	Off-winding, fixed position, no mounting limitation
Type of action.....	Type 3C
Reset characteristic.....	Automatic
Control pollution degree.....	Degree 1

Specifications

Standard operating temperature range (Increments 5K)	From 80°C - 170°C
Tolerance on open temperature	± 5K
Peak temperature (5 min)	200°C
Max. Ambient temperature	T-open +20°C
Time check at T-ambient 25°C	4 to 10 seconds

Certificate

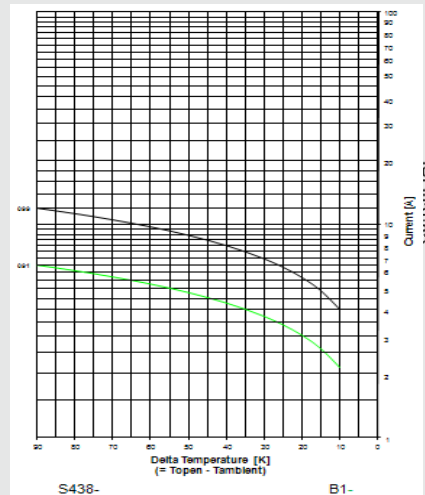
CQC Certificate No.: 12002080966(No. is confirming).

UL Certificate No.: 20140214-E15962(UL2111, CSA C22.2 No. 77).

ENEC Certificate No: 2166687.01(EN60730-2-2).

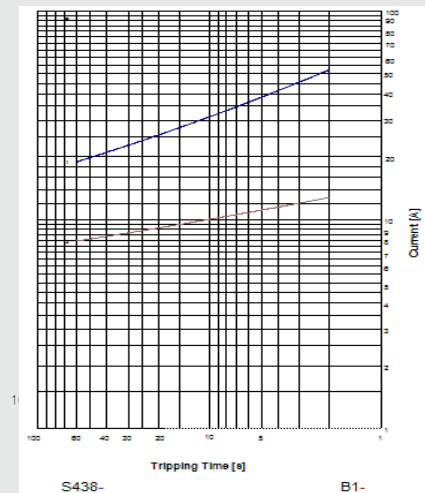
Ultimate Trip Current vs. Ambient Temperature (non-circulating air)

Approx. to be used for selecting samples for verification tests



Average First Cycle Tripping Time vs. Current (ambient is 25°C)

Approx. to be used for selecting samples for verification tests



TECHNICAL / SALES SUPPORT



Holland
Phone +31 546 879560 Fax +31 546 879204
Italy
Phone +39 039 6568310 Fax +39 039 6568316

Internet: www.sensata.com

Email: info-cpe@list.sensata.com

Important Notice: The products and services of Sensata Technologies and its subsidiaries described herein are sold subject to Sensata's standard terms and conditions of sale. Customers are advised to obtain the most current and complete information about Sensata products and services before placing orders. Sensata assumes no liability for applications assistance, customer's applications or product designs, software performance, or infringement of patents. The publication of information regarding any other company's products or services does not constitute Sensata's approval, warranty or endorsement thereof.