



3MP SELF-HOLD

MOTOR PROTECTOR

Introduction

Recent history has seen a growing demand for a non-self resetting motor protection device to ensure a high level of safety. Sensata Technologies has developed the self hold motor protector for both 120 & 250 Vac applications in a wide current range.



Design & Operating Principles

The heart of the 3MP self hold consists of the pre-set Klixon® snap action bimetallic disc welded into a metal housing with integrated terminal. The housing is covered by the plate on which a heater can be welded to increase the current sensitivity of the device. A PTC pill is mounted on top of the metal housing by a clip to meet the requirements for self hold. The combination of a variety of standard terminal configurations and carefully select-ed materials provides easy handling and mounting. Customized terminal configura-tions are available on request. Wires includ-ing connectors can be automatically attached to the standard crimp terminals. Sensata Technologies supplies a range of standard leads configurations; customized solutions are available on request. In construction where the 3MP self hold device is contacting conductive parts of the motor assembly, Sensata Technologies can deliver the self hold devices with a Mylar™ insulation sleeve. Customized coding and coloring is an option on request.

The operating principle of the 3MP self hold is both simple and effective. The protector is actuated by current passing through it and by the heat received from surrounding parts.

The electrical circuit is interrupted when the disc reaches its pre-set open temperature. Due to the heat supply from the PTC pill, the bimetal disc does not cool down below the close temperature. The contacts will remain open untill the appliance is switched off by the user, assuring a higher level of safety. The self-hold condition immediately after the first trip cannot be guaranteed by the protector itself. This depends on the application in combination with the selected 3MP self-hold and must be checked during application verification tests. (same as for winding temperatures). When switched off the device cools down to a safe temperature again and the contacts will automatically reset. The bimetal disc provides excellent thermal and current sensitivity in overload situation. Under locked rotor conditions the integrated heater in combination with the bimetal disc provide very accurate trip times for maximum protection.

Applications

The 3MP self hold is used in domestic and industrial electric motors for washers, vacuum cleaners, chain saws, trimmers, lawn mowers and pumps in the 120 and 250 Vac applications.



SPECIFICATIONS

Standard operating temperature range	from 80°C - 170°C (Increments 5K)
Tolerance on open temperature	± 8K
Peak Temperature (5 Min)	200°C
Ambient Temperature to Guarantee Stable Self Hold function	0°C
Max. Ambient Temperature	T-Open +20°C
Time Check at T-Ambient 25°C	4 to 10 Seconds Depending on Current Level
Contact Rating	18 A @ cos 0.6 / 250Vac / 300 cycles



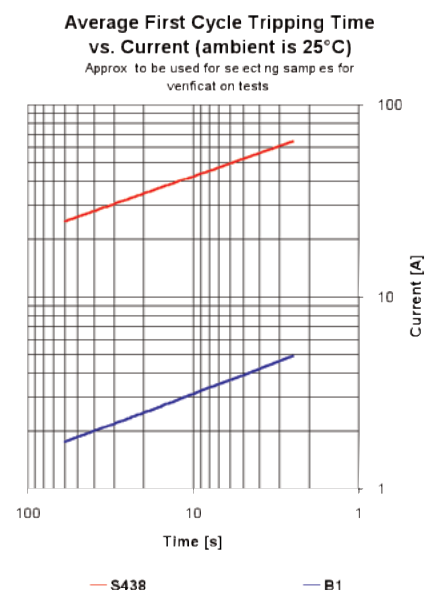
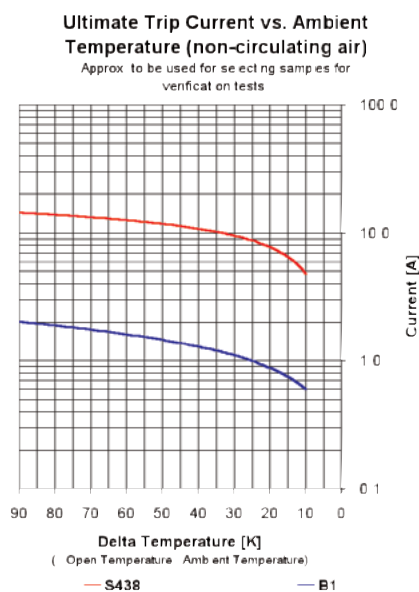
TECHNICAL SPECIFICATIONS

Declarations

Declarations to EN60730-2-2	
Purpose of the Control	Thermal Motorprotector
PTI of Insulation Materials	PTI 250
Method of Mounting	Off-winding, fixed position, no mounting limitation
Type of Action	Type 3C
Reset Characteristic	Automatic Voltage Maintained by PTC Heater. Device resets by interrupting power supply.
Control Pollution Degree	Degree 1

Curves

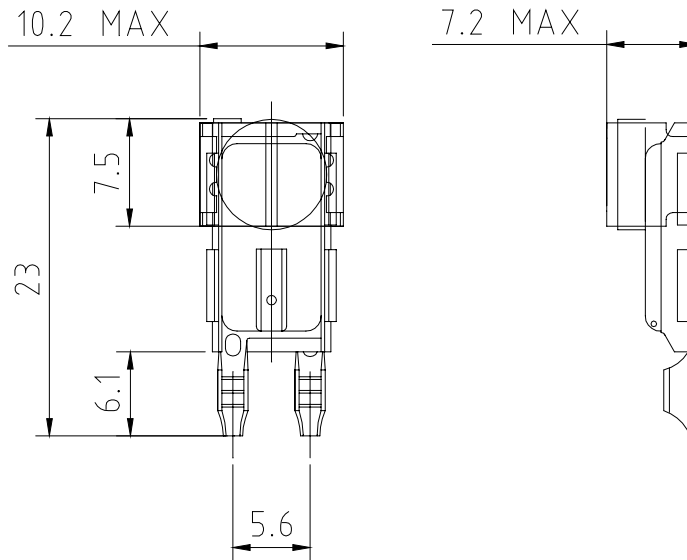
The curves of First Cycle Tripping time and Ultimate trip current are meant to be for selecting samples to perform verification tests only. In the figures two curves of a wide range of possibilities are shown. The level and slope can be varied by making an other selection for the pre-set temperature, bimetal disc and/or heater.





DIMENSIONS (mm)

Dimensions in mm [Inch]



AGENCY APPROVALS & CERTIFICATIONS



Agency	File Number	Standard
ENEC	2014531.07	EN60730-2-2 Thermal motor protector
UL / C-UL	E15962	UL2111 / CSA C22.2 No. 77

Revised 03/21/18

Sensata Technologies, Inc. ("Sensata") data sheets are solely intended to assist designers ("Buyers") who are developing systems that incorporate Sensata products (also referred to herein as "components"). Buyer understands and agrees that Buyer remains responsible for using its independent analysis, evaluation and judgment in designing Buyer's systems and products. Sensata data sheets have been created using standard laboratory conditions and engineering practices. Sensata has not conducted any testing other than that specifically described in the published documentation for a particular data sheet. Sensata may make corrections, enhancements, improvements and other changes to its data sheets or components without notice.

Buyers are authorized to use Sensata data sheets with the Sensata component(s) identified in each particular data sheet. HOWEVER, NO OTHER LICENSE, EXPRESS OR IMPLIED, BY ESTOPPEL OR OTHERWISE TO ANY OTHER SENSATA INTELLECTUAL PROPERTY RIGHT, AND NO LICENSE TO ANY THIRD PARTY TECHNOLOGY OR INTELLECTUAL PROPERTY RIGHT, IS GRANTED HEREIN. SENSATA DATA SHEETS ARE PROVIDED "AS IS". SENSATA MAKES NO WARRANTIES OR REPRESENTATIONS WITH REGARD TO THE DATA SHEETS OR USE OF THE DATA SHEETS, EXPRESS, IMPLIED OR STATUTORY, INCLUDING ACCURACY OR COMPLETENESS. SENSATA DISCLAIMS ANY WARRANTY OF TITLE AND ANY IMPLIED WARRANTIES OF MERCHANTABILITY, FITNESS FOR A PARTICULAR PURPOSE, QUIET ENJOYMENT, QUIET POSSESSION, AND NON-INFRINGEMENT OF ANY THIRD PARTY INTELLECTUAL PROPERTY RIGHTS WITH REGARD TO SENSATA DATA SHEETS OR USE THEREOF.

All products are sold subject to Sensata's terms and conditions of sale supplied at www.sensata.com SENSATA ASSUMES NO LIABILITY FOR APPLICATIONS ASSISTANCE OR THE DESIGN OF BUYERS' PRODUCTS. BUYER ACKNOWLEDGES AND AGREES THAT IT IS SOLELY RESPONSIBLE FOR COMPLIANCE WITH ALL LEGAL, REGULATORY AND SAFETY-RELATED REQUIREMENTS CONCERNING ITS PRODUCTS, AND ANY USE OF SENSATA COMPONENTS IN ITS APPLICATIONS, NOTWITHSTANDING ANY APPLICATIONS-RELATED INFORMATION OR SUPPORT THAT MAY BE PROVIDED BY SENSATA.

Mailing Address: Sensata Technologies, Inc., 529 Pleasant Street, Attleboro, MA 02703, USA.

Copyright © 2018 Sensata Technologies, Inc.

CONTACT US

Americas

+1 (508) 236-2551
electrical-protection-sales@
sensata.com

Europe, Middle East & Africa

+31743578156
info-sse@list.sensata.com

Asia Pacific

sales.isasia@list.sensata.com

China +86 (21) 2306 1500

Japan +81 (45) 277 7117

Korea +82 (31) 601 2004

India +91 (80) 67920890

Rest of Asia

+886 (2) 27602006 ext 2808

www.sensata.com